



AMAZONE

Mounted spreaders **ZA-V**



AMAZONE spreaders
meet all European
environmental
standards

ZA-V mounted spreaders



❗ “We liked the hopper cover very much and, above all, the position for washing off and where it can dry.”

❗ “We spread at 30 m and travelled at 15 km/h. And yet we were still able to spread at more than 500 kg/ha – very good.”
 (“profi” – Practice Test ZA-V 2700 Profis Tronic fertiliser spreader · 01/2017)

❗ “Our time using the ZA-V was only short but very convincing.”
 (“profi” – Test report ZA-V 2000 Profis Tronic fertiliser spreader · 03/2015)

The ZA-V mounted spreader, with a hopper capacity of 1,400 to 4,200 l, reaches impressively high working speeds of up to 30 km/h. Thanks to its high application rate of up to 390 kg/min and a working width of up to 36 m, it achieves exceptionally high work rates.

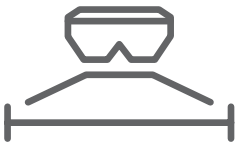
ISOBUS communication, the weighing system, hydraulic or electric Limiter V or V⁺ border spreading systems plus the many other optional extras available make the ZA-V one of the most up-to-date fertiliser spreaders in its class.



	Page
The advantages at a glance	4
High-quality, multi-layer paint	6
Frame and hopper Extensions	8
Profis weighing system Tilt sensor	10
Low level sensor Slope spreading kit Spreading disc drive	12
Spreading unit Spreading discs and agitator	14
Limiter V, Limiter V ⁺ border spreading systems and border spread deflector	16
Innovation Farm border spreading field trial	18
Optional equipment – perfect down to the last detail	20
Front mounting the spreader	23
ZA-V model overview ZA-V with hydraulic shutter actuation	24
ZA-V Easy EasySet 2	26
ZA-V Profis Control AmaSpread 2	28
ZA-V Tronic ZA-V Profis Tronic ZA-V Profis Hydro	30
ISOBUS – one language, many benefits!	32
Spreader Application Center mySpreader App	38
Technical data	40

❗ “Working in the field with the ZA-V Profis Tronic is pleasingly ‘unspectacular’. Just fill up with fertiliser and off we go.”
 (“profi” – Practice Test ZA-V 2700 Profis Tronic fertiliser spreader · 01/2017)

ZA-V mounted spreaders



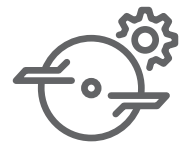
10 m – 36 m



1,400 l – 4,200 l



2 to 16 part-width sections



Mechanical or hydraulic

The advantages at a glance:

- + Efficient and intuitive**
Quick adjustment for precise spread patterns up to 36 m and 390 kg/min
- + Profis weighing system**
Precise application rates thanks to the 200 Hz weighing system – enter in the spread rate and drive. There is nothing simpler.
- + Electric LimiterV⁺**
Always the most effective border spreading method – Comfortable change between border spreading techniques from the cab
- + Comfortable operation**
Easy set-up using the QuickSet blade adjustment and the intuitive mySpreader App that means the latest fertiliser database is always at hand
- + Deep-drawn base hopper**
No edges or weld seams – easy cleaning and no fertiliser wastage
- + Durability**
Maximum longevity thanks to a combination of cathodic dip priming and powder coating

MORE INFORMATION

www.amazone.net/za-v



PRODUCT FILM
Find out more



DOWNLOADS
mySpreader App



SMARTLEARNING
www.amazone.net/smartlearning

The best of both worlds

Cathodic dip painting (CDP) combined with powder coating

7 years
guarantee

against perforation corrosion



register
enregistrer
registrieren



The new paint system, in combination with the use of largely stainless steel components, provides a high level of operation protection and durability, rounded off by the use of impact-resistant and UV-resistant plastic sieves.



The KTL dip-paint priming of all components enables an almost comprehensive corrosion protection.



Double protection through the additional thick powder coating, providing increased protection against mechanical wear and tear.

High-quality, multi-layer paint

The paintwork on a fertiliser spreader is exposed to extreme demands. The paintwork is designed to protect the spreader from corrosion, especially when handling fertiliser and where moisture is involved. AMAZONE uses a new paint process for the ZA-V fertiliser spreaders. This involves, on the one hand, a cathodic dip painting process (known as KTL) for the primer to give the best possible protection on the internal surfaces of tubes and box sections and, on the other hand, a powder coating process to create a high-quality visual finish with extra-thick paint providing increased protection against physical wear and tear.

7 year manufacturer's guarantee

Based on this optimum painting process, AMAZONE is able to offer its customers a manufacturer guarantee of seven years against rusting through. From 01/01/2023, customers can apply to have the guarantee activated for ZA-V, ZA-TS, and ZG-TS models, starting from the 2022 model year. This registration is done very simply via the manufacturer's

portal, myAmazone, bearing in mind the terms and conditions (www.amazone.net/7-years) stated there. After registration, one can continue to work without any worries.

The benefits

- ✔ **Cathodic dip painting process**
 - Suppression of rust infiltration
 - Best possible protection, even on the inner surfaces of tubes and box sections
- ✔ **Powder coated topcoat**
 - Double protection through additionally applied powder coating
 - Improved resistance against everyday wear and tear
- ✔ **Quality and reliability**
 - All the components on the spreading unit and all the hydraulic fittings are made of stainless steel
 - Impact, UV and chemical resistant plastic sieves

High-quality, multi-layer paint finish - the most modern from all angles:

- ① 14-stage **painting preparation** (e.g. degreasing)
- ② **Zinc phosphating** provides the most effective counteraction of rust formation
- ③ **Thick cathodic dip priming** for full corrosion protection, even in cavities and those hard-to-reach areas
- ④ **Powder coating** for a high-quality appearance and extra thick paint for increased protection against mechanical demands



This combination of tried and tested paint processes brings together the best from all sectors, resulting in a high-quality, multi-layer paint finish

Frame and hopper

Strength pays dividends



ZA-V 1400 with Special frame and a payload of up to 2,200 kg

A wide choice of frames

- ✔ **Special frame:** 2,200 kg payload, Cat. II linkage dimensions and hitch pins.
- ✔ **Super frame:** 3,200 kg payload, Cat. II linkage dimensions and hitch pins.
- ✔ **Ultra frame:** 4,500 kg payload, Cat. III linkage dimensions and Cat. II or III hitch pins.

The deep-drawn base hopper

The base hopper has a capacity of 700 l. It is deep-drawn, meaning that it does not have any corners, edges, and welded seams. This provides a continual and even flow of the fertiliser. Also the cleaning of the spreader is made easy thanks to this design.

The benefits of the design

- ✔ No corners and edges
- ✔ A even and constant flow of fertiliser
- ✔ Less danger of bridging
- ✔ Corrosion resistant
- ✔ Simple cleaning procedure

Outstanding design: mounted spreader with up to 4,500 kg payload

The benefits

- ✔ Lightweight frame design with excellent robustness
- ✔ Optimised centre of gravity and yet plenty of space for hitching up



These bolt-on extensions offer a volume of 600 l for S hoppers and 800 l for L hoppers.

Additional bolt-on extensions

For subsequent increases to the hopper capacity of the ZA-V, AMAZONE offers, for the S and L base hopper extensions, a further suitable bolt-on extension.

- ❗ “The hopper extension is equipped at each side with one large window at the front and another at the back, meaning that the fertiliser level was easily visible, even with the cover was closed.”
 (“profi” – Practice Test ZA-V 2700 Profis Tronic fertiliser spreader · 01/2017)

ZA-V with L 800 bolt-on extension



The extensions

In two widths and many volumes

The wide ones
with a filling width of 2.71 m
and foldable ladders



L 2200 extension

The narrow ones
with a filling width of 2.22 m



S 1400 extension S 1700 extension



L 2700 extension



S 2000 extension



L 3200 extension



S 2600 extension with foldable ladder



L 4200 extension

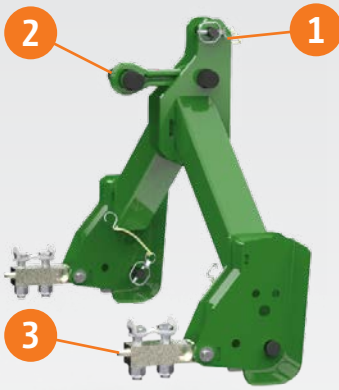


He who weighs wins!

ZA-V Profis with weigh cell frame



- ✔ Filling aid in combination with the Profis weighing system
 Initial flashing followed by continuous illumination of the work lights signals that the fill level has been reached.



- ① Weigh frame
- ② Horizontally aligned tie rods
- ③ Weigh cells



✔ Compact tractor mounting

No calibration. Top up the spreader hopper up and off we go! There is nothing simpler.

The weighing system for the Super and Ultra frames provides controlled convenience and increased safety. With its 200 Hz weighing system, it works on-line to determine the different characteristics of the spreading material – and all this with the highest degree of measuring accuracy. It automatically compares the actually applied rate with the pre-determined rate. Deviations in the flow characteristics, for example when spreading blended mineral fertilisers, are

detected and the spreader is re-adjusted automatically via the electric metering shutter slides. In addition, for field-specific nutrient application mapping, for example, the applied rate is precisely documented.

For a balanced nutrient supply, the spread rate can be changed at the touch of a button via the terminal.

Tilt sensor for working on steep, undulating terrain

The ZA-V Profis can take any possible influences on the weighing system caused by the centre of gravity shifting into account whilst on the move with the aid of the tilt sensor. The twin-axis tilt sensor assesses the forward and

back tilt, as well as side to side, correcting any measurement errors that may arise when going up and down hills or when driving across a hillside.

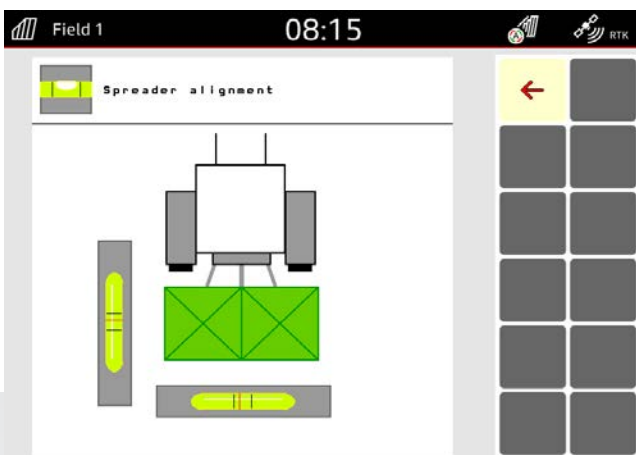
The benefits

Constant regulation and calibration under all operating conditions:

- ✔ Side spreading, border spreading and water course spreading
- ✔ Part-width section control
- ✔ Use of application maps and N-sensors
- ✔ Spreading of blended fertilisers

Accurate weight measurement:

- ✔ Display of residual volume
- ✔ Remaining area and distance to travel
- ✔ Documentation of the total volume spread



- ✔ The angle of the ZA-V Profis Tronic and ZA-V Profis Hydro is conveniently displayed on the ISOBUS terminal with a spirit level symbol, so that the ZA-V can be easily kept in the horizontal position.

Reliable down to the last detail

Low level sensors

When spreading on slopes, or when border spreading, one hopper tip can empty quicker than the other. In order to check each outlet apertures individually, AMAZONE therefore additionally offers low level hopper sensors. If uneven emptying occurs, the empty hopper tip is graphically displayed on the operator terminal in red, so that the driver is warned in good time.



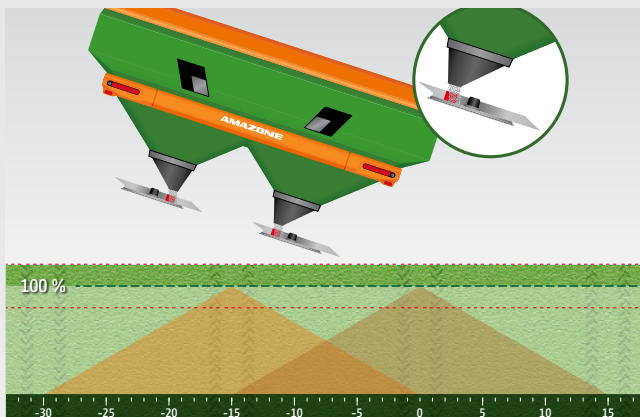
The driver receives a warning message early enough when either hopper tip is almost empty.

Slope spreading kit

Precise fertiliser distribution on slopes

Uniform crops, even on slopes

Exact fertiliser distribution over the entire working width is the basis for uniform and resource-efficient crop management as well as exploiting the full yield potential. This does not present any difficulty for modern-day technology in flat areas. On hilly terrain, the topography has a significant impact on the spread fan and thus fertiliser distribution in the field.



Simple special option with a high impact

The point the material is delivered onto the disc in practice is changed by the inclination of the fertiliser spreader. The fertiliser is guided down onto the disc over a longer distance by means of the slope spreading kit, thereby minimising the impact of the slope to a considerable extent. Trials by the Innovation Farm in Austria have confirmed the ZA-V's precise lateral distribution, even on hilly terrain.

- ❗ "Apart from the economic aspects, this also has important ecological benefits for the environment."
- ❗ "Lateral distribution using the slope spreading kit: The variation with the slope spreading kit achieved [...] a coefficient of variation (CV) of 4.9%."

("Landwirt" – Spreading fertiliser with precision, even on slopes · 11/2022)

Travelling across the slope – with the slope spreading kit:

Perfect distribution, no distortion of the spread pattern at the sides

The spreading disc drive

Mechanical or hydraulic, choose for yourself!

Tronic – mechanical spreading disc drive

On the mechanically-driven ZA-V spreader, the spreading unit and agitator are driven by the PTO shaft. In this case, the spreader is protected from overload, as standard, by a universal drive shaft with friction coupling. The input speed from the tractor PTO is transmitted via the central gearbox resulting in an increased spreading disc speed. This allows spreading at low engine revs across the maximum working width.

- ✔ With mechanically-driven spreaders, between two and eight part-width sections are switchable, depending on the operator terminal.
- ✔ Robust driveline with a fuel-efficient gearbox ratio of 1:1.33
- ✔ The standard PTO shaft with friction clutch provides protection against overload

- ❗ “Simple and cost-effective part-width section control. Even with the spread rate reduction system of the ZA-V, good results can be achieved at the common working widths.”
 (“top agrar” – System comparison “Automatic spreading in wedge-shaped fields: Which system is best?” · 02/2016)



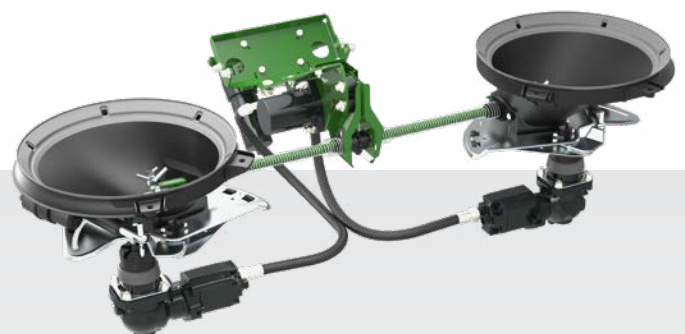
Schematic representation of the mechanically-driven ZA-V

Hydro – hydraulic spreading disc drive

The hydraulically-driven ZA-V Hydro spreader enables operation at different spreading disc speeds, irrespective of the tractor’s engine revs. In this way, extremely comfortable and precise spreading is possible, plus, on the headland, side, border or water course spreading can be activated irrespective of which side. The driver can conveniently switch between these separate functions whilst on the move. If the pre-set speed is not suitable for precise side spreading, it can also be adjusted via the terminal during operation. These changes are automatically saved in the terminal for the respective border situation.

- ✔ The side-independent regulation of the spreading disc speed permits even more precise spreading on wedge-shaped fields. Up to 16 part-width sections are possible in combination with SectionControl.
- ✔ With pressure filter as standard

- ❗ “In addition to the fertiliser-saving, easily interchangeable and adjustable spreading at the field border, the ZA-V Hydro also provides the benefit that this spreader operates completely independently from the tractor engine speed, thus saving fuel.”
 (“AGRARTECHNIK” – Practice Test ZA-V 2700 Profis Hydro · 06/2017)



Schematic representation of the hydraulically-driven ZA-V

The precision spreading system

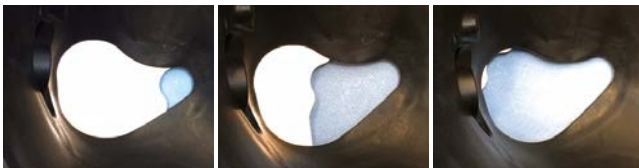
For maximum efficiency

Spreading system with Soft Ballistic System

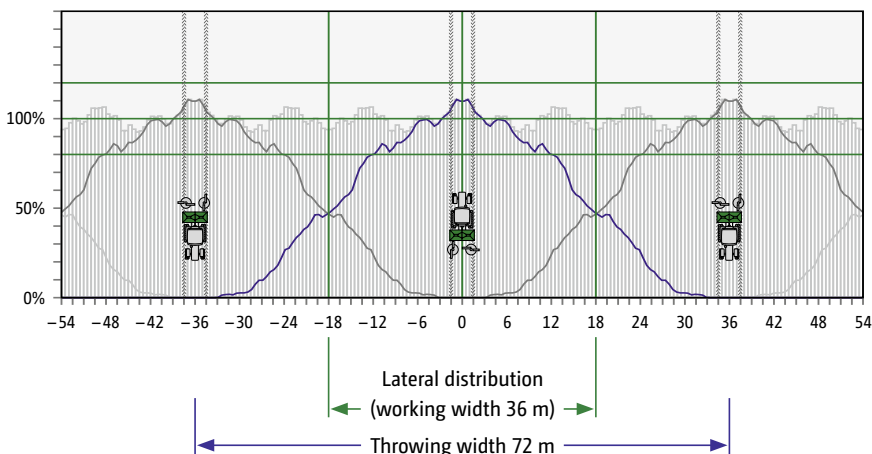
1. Robust spreading unit with only one electric actuator per side
2. Large-size, specially shaped shutter opening with a throughput of up to 390 kg/min for a consistent spread pattern regardless of application rates and forward speeds
3. Slow-turning agitator ensures a continuous fertiliser flow and prevents blockages
4. Spreading unit with Soft Ballistic System for optimum fertiliser protection due to the fertiliser being collected very close to the centre of the spreading disc
5. Avoidance of any hopper residues and easy cleaning due to the shape of the hopper tip
6. The special profile and angling of the spreading vanes creates a multi-spread fan
7. Easy adjustment of the spreading vanes via QuickSet



Specially-shaped aperture provides automatic correction against quantity effect



The entire spreading unit is made of stainless steel and high-quality, glass-fibre reinforced plastic for a long service life and high resale value.



Double overlap at up to 36 m working width

The spreading unit of the ZA-V has been developed using three-dimensional spread patterns to achieve perfect lateral distribution. The Soft Ballistic System enables working widths of up to 36 m. Large overlap zones ensure a perfect spread pattern.



The intelligent agitator

The mechanically-driven star agitator of the ZA-V is positioned directly above the deep aperture and in this way provides a reliable and consistent fertiliser flow at all application rates. Turning at just 45 rpm, the agitator gives fertiliser-protecting operation.

Gentle handling of the fertiliser

Mineral fertiliser needs to be handled gently to ensure a precise distribution and an exact placement to the plant across the entire working width. The agitator, shutter components and spreading discs of the ZA-V are optimally tailored to each other. This protects the fertiliser and secures high yields.



Multiple spread fans: optimum lateral distribution under all conditions

The specific profile and angling of the spreading vanes result in a multiple spread fan. The optimal trajectory and the large overlapping pattern of the fertiliser make the spreader insensitive to changes in inclination and height.

- ✔ Easy adjustment: simply level up and drive
- ✔ The same setting for normal fertilisation and late top dressing
- ✔ Any changes in inclination due to varying hopper fill levels do not affect the spread pattern

Spreading discs with QuickSet

Only 3 pairs of spreading discs cover the entire operational range from 10 m to 36 m. The working width is simply, quickly and safely adjusted via the spreading vane position. Setting of the spreading vanes is carried out without any tools via the QuickSet adjustment system.

- ✔ Working width ranges:
 - V-Set 1: 10 m to 21 m (normal)
 - V-Set 2: 18 m to 28 m (HD hard-faced spreading vanes)
 - V-Set 3: 24 m to 36 m (HD hard-faced spreading vanes)

Border spreading systems

Limiter V, Limiter V⁺ and border spread deflector



Easy change between the boundary spreading techniques

Both the hydraulically-operated Limiter V and the electrically-operated LimiterV⁺ border spreading devices can be set for side spreading, border spreading and water course spreading. AMAZONE offers settings for all 3 scenarios.

- ① Only the fertiliser flow from the long spreading vane is deflected when using a steeper angle of the border spreading device.
- ② If the angle of the border spreading device is shallowed further, the fertiliser flow from both spreading vanes is deflected.
- ③ In the completely lowered position, the lamellae provide an accurate spread pattern at the field border.

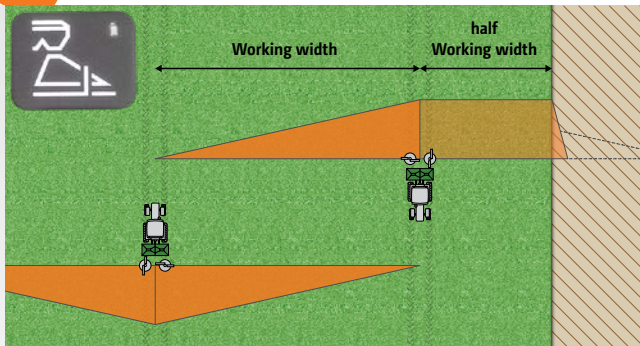
Limiter V

With the Limiter V, the recommended angle of the border spreading device is set via a pin before starting work depending on the border spreading technique adopted. The border spreading device can then be hydraulically lowered to the pre-selected position on the headland and then raised again in the field.

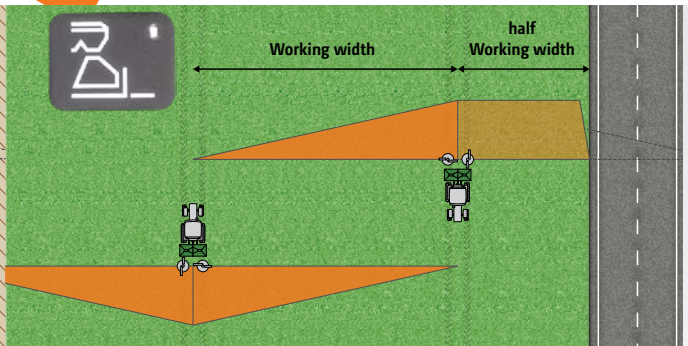
Limiter V⁺

With the Limiter V⁺, the border spreading device can be adjusted electrically to the respective field boundary position in small steps depending on the border spreading technique. This is comfortably carried out from the tractor cab during fertiliser application.

1 Side spreading (yield oriented setting)

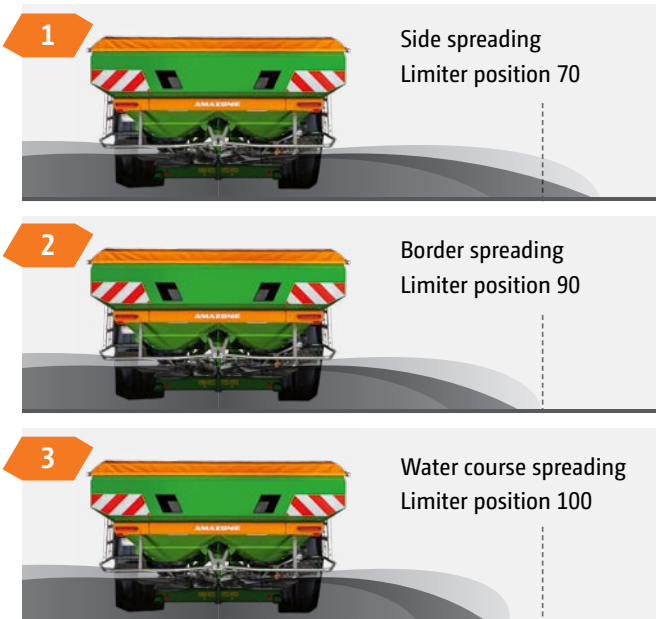


2 Border spreading (environmentally oriented setting)





Border spread deflector folded upwards

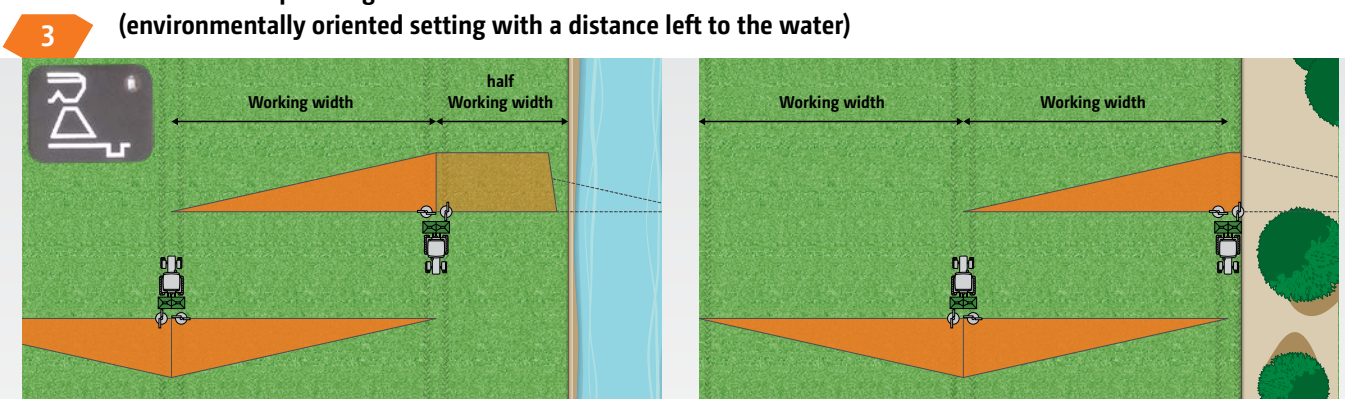


Border spread deflector

A border spread deflector is available for spreading inwards from around the edge of the field. When the border spread deflector is swivelled down, spreading is carried out only with the field side spreading disc, so that any fertiliser is deflected in such a way that it is only thrown behind the tractor and into the field, but not beyond the border. The border spread deflector can be utilised on both the left and right hand side. The border spread deflector is actuated manually or, as an option, hydraulically from the tractor cab. When swivelled up, the border spread deflector has no influence on normal spreading.

Water course spreading

(environmentally oriented setting with a distance left to the water)



Proven precision!

Innovation Farm border spreading field trial

INNO
VATION
FARM 

FARMING FOR FUTURE



- ✔ Large-scale field trials carried out by Innovation Farm in Austria compared different border spreading systems under practical conditions.

Additional revenue per hectare of cropped area and per year with the use of the different border spreading systems at a width of 18 m compared to a reference point without a border spreading system

Average field size	2 ha	4 ha	12 ha
Limitier	€ 7.85	€ 5.56	€ 3.18
Hydro	€ 2.06	€ 1.46	€ 0.83

(top agrar 07/2022, Source: Innovation Farm)

Calculation basis:

CAN: 650.00 €/t Ø Wheat yield: 7.8 t/ha Profit: 350.00 €/t

Field trials prove the best border spreading results

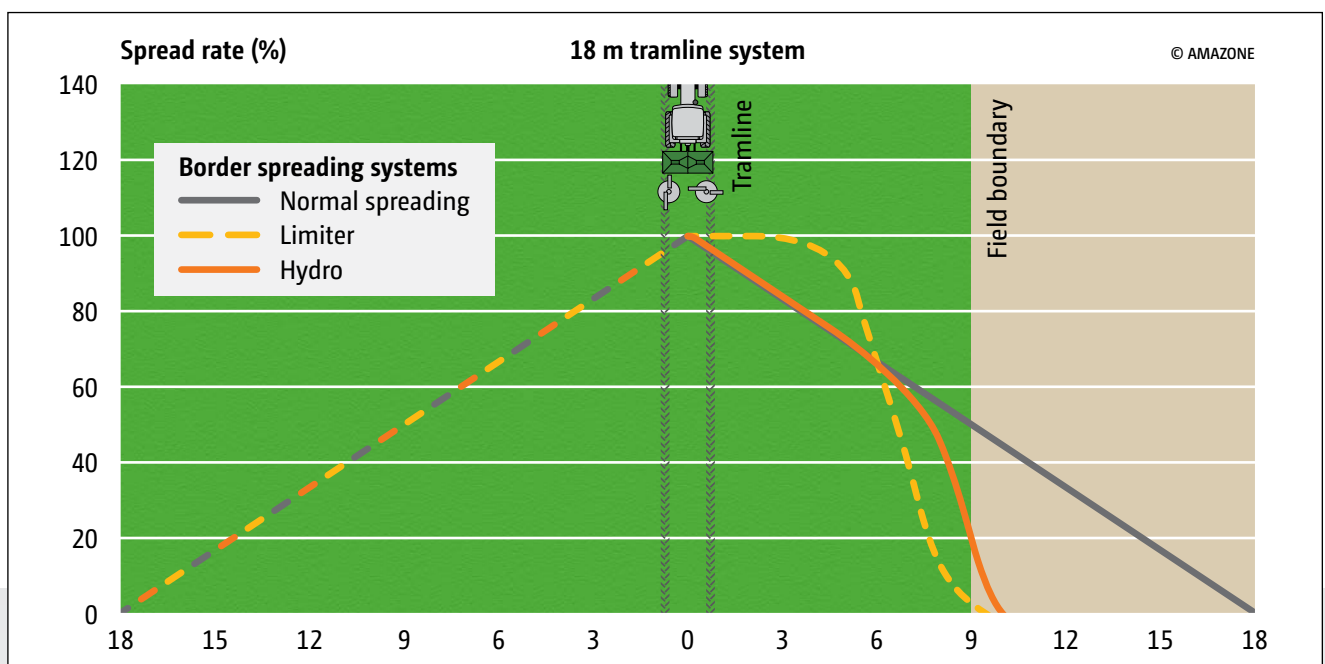
The aim of the field trial was to demonstrate that border spreading systems and equipment not only offer ecological benefits, but also have a great influence on the potential yield in the field boundary area. Precise technology is required to spread the full rate of fertiliser right up to the field boundary, as well as avoiding any fertiliser losses outside the field boundary.

The Limiter provides a simple and precise introduction to border spreading systems. Especially with the Limiter V⁺ electric border spreading device, it is possible to harness the full potential of the field by responding to changing border spreading methods from the tractor cab.

Key statements of the trial

- ❶ “A wider working width or smaller field sizes increases the level of return on a boundary spreading system.”
- ❷ “All border spreading systems can significantly reduce the amount of fertiliser thrown outside the boundary.”
- ❸ “With the ‘Lamella block’ and ‘Hydro’ systems, the percentage outside the field boundary is reduced to only 2.5%.”

(top agrar - “Precision goes boundary spreading” - 07/2022)



The diagram shows the border spreading operation, in which the aim was not to spread any fertiliser beyond the field boundary if possible.

Optional equipment

Perfect down to the last detail



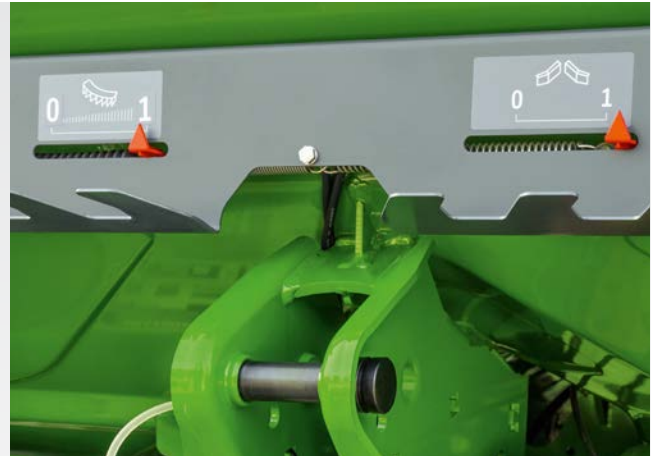
Holder for the GPS receiver on the fertiliser spreader

The holder, including a 12 m GPS connecting cable, serves to mount a GPS receiver on the fertiliser spreader instead of on the tractor. The GPS receiver can remain on the spreader if the tractor is changed frequently, such as with machine cooperatives. In use, the GPS receiver is always located clearly above the fertiliser spreader.

Roll-over cover

The roll-over hopper cover, either manually operated or hydraulically actuated from the tractor, is available for all S extensions and L extensions. It safely covers the whole of the hopper access area and ensures, when compactly rolled up, the maximum filling opening. The roll-over hopper cover can also be combined with the bolt-on S 600 and L 800 extensions.

- ✓ Direct filling from a tipping trailer or big bags is no problem. The wide L extension is of major benefit, especially when using large loading shovels.



Position indicator for the Limiter (left) and bed spreading deflector or border spread deflector (right)

Position indicator for the border spreading systems

AMAZONE offers a position indicator for monitoring the position of the border spreading system from the tractor cab. The position can be comfortably monitored during the spreading procedure via the mechanical display within the line of sight at the front of the fertiliser spreader.

Swivel hopper cover

As a cost-effective alternative to the roll-over hopper cover, the swivel hopper cover, with large sight windows can be chosen but only for the S extensions.



Swivel hopper cover in its maintenance position for easy internal cleaning



Rolling and parking device for Super and Ultra frames



Special frame with rolling and parking device



Parking stand with skids for Super and Ultra frames

Swivel rolling and parking device

The swivel rolling and parking device facilitates the easy mounting of the spreader on and off the tractor and for manoeuvring in the yard. The castor wheels are quickly folded in and out and optimally protected from dirt.

Camera system for the ZA-V – Safety first!

The optionally available camera system is there to offer added safety when manoeuvring. The high resolution, anti-glare monitor is backlit and can also display two cameras at once. The coupling to an ISOBUS terminal with an analogue video input is also possible.



Alternatively, the picture from the camera can also be displayed via the analogue video input on the AmaTron 4,

Rolling and parking device for Special frame

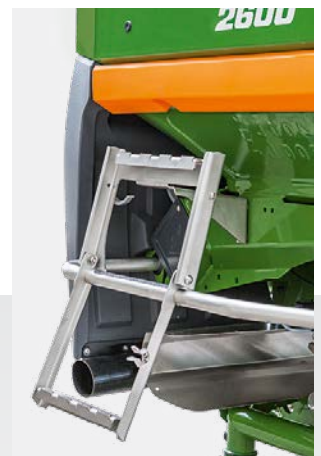
The robust rolling device makes it easier to mount and demount the spreader and manoeuvre it in the yard. The castor wheels can be quickly removed.

Parking device options

As an alternative to the swivel rolling and parking device, there is also a cheaper parking stand with integrated skid available.

Ladders that ensure safe access

For optimum access to the hopper from outside, even on the narrow extensions, a ladder is available which can be fitted to the left and/or right hand side. For the wide L extensions though, ladders are provided to both sides as standard.



The stainless steel ladders are perfectly integrated

Let there be light

Multiple benefit of the working lights



The lighting for spreading unit is integrated securely in the lighting carrier – shown here on the ZA-TS with BorderTS deflector and ArgusTwin.

Spread fan, spreading unit and hopper internal lighting

An optional work light kit is available as a supplement to the standard LED lighting for the ZA-V mounted spreader.

LED work lights are mounted in the hopper above the spreading discs and at the sides of the spreader. This ensures that the user has an overview of the fill level in the hopper at night, and has adequate lighting for changing the spreading discs and for setting the spreading vanes.

The controls of the work lights are fully integrated in the software of the fertiliser spreader and can therefore be operated remotely from the tractor cab via the AmaSpread 2 or ISOBUS terminal.

The two side-mounted LED work lights provide perfect illumination of the spread fan to the left and right in the dark.

Filling aid

Practical users will particularly love the filling aid provided by the work lights and the Profis weighing system. Initial flashing followed by continuous illumination of the work lights signals that the fill level has been reached. A second person, or frequent getting up and down for checking, are no longer necessary.



Internal hopper lighting



The pre-set weight is reached when the work lights come on continuously.

Front and Back duo

A new level of precision



A road lighting kit is available for safe use on the road when in transport with the front-mounted spreader.

Two into one goes

For customers who intend to accurately spread two different mineral fertilisers in just one pass, AMAZONE offers the unique possibility of a front-mounted spreader. Other than when utilising blended fertilisers in one fertiliser spreader, this option allows the optimal setting of each spreader according to the properties of the relevant fertiliser. In this way, the perfect lateral distribution for both fertilisers is achieved. Also spreading with two different application maps is possible.

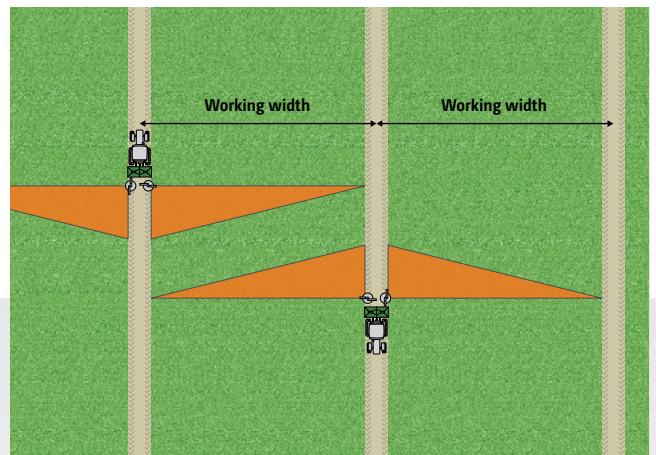
The benefits of front-mounting

- ✔ Possibility to accurately spread two different types of fertiliser in just one pass
- ✔ More capacity from the additional hopper capacity yet with the benefits of a mounted machine – manoeuvrable and speedy
- ❗ “The spreader duo shows its strengths in its precision.”
- ❗ “The combination is manoeuvrable, efficient and improves the weight distribution on the front and rear axle.”
(agrarheute magazine– test report with the front mounted spreader · 09/2018)

How to optimally spread in beds

Bed spreading with bed spreading deflector for both sides

For spreading specialist crops in beds to either side of the tractor, AMAZONE offers the bed spreading deflector. It keeps the track virtually free of fertiliser. Actuation of the bed spreading deflector is carried out hydraulically from the tractor seat.



One spreader – so many possibilities

Decide for yourself!

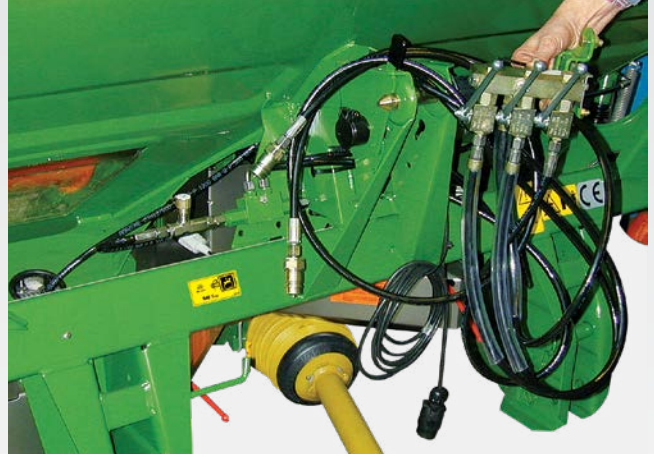
	ZA-V	ZA-V Easy	ZA-V Profis Control	ZA-V Tronic	ZA-V Profis Tronic	ZA-V Profis Hydro
Mechanical spreading disc drive	●	●	●	●	●	—
Hydraulic spreading disc drive	—	—	—	—	—	●
Hydraulic shutter actuation	●	—	—	—	—	—
Electric shutter actuation	—	●	●	●	●	●
Forward-speed dependent application rate control	—	●	●	●	●	●
Weighing system	—	—	●	—	●	●
Tilt sensors	—	—	○	—	○	○
Low level sensors	—	—	○	○	○	○
Border spreading via the Limiter V	○	○	○	○	○	—
Border spreading via the Limiter V ⁺	—	○	○	○	○	—
Border spreading via Hydro drive	—	—	—	—	—	●
Maximum number of part-width sections	2	2	6	8	8	16
GPS-Switch ready	—	—	—	●	●	●
Required terminal	—	EasySet 2	AmaSpread 2	ISOBUS	ISOBUS	ISOBUS

● Standard ○ Option — not available



ZA-V

with hydraulic shutter actuation



Simple, direct actuation

If equipped with the hydraulic shutter actuation, AMAZONE offers the simple possibility to operate the shutters via two double-acting hydraulic spool valves on the tractor. As with all ZA-V models, this version is also equipped with the precision spreading system for working widths from 10 to 36 m, which includes the SBS Soft Ballistic System. It is available in hopper capacities from 1,400 to 4,200 l.

The complete shutter slide assembly underneath the outlet opening can be adjusted via individual setting levers for each side of the spreader. The position of the shutter slide assembly is fixed via an additional clamping lever. The special feature of this model and its hydraulic shutter slide adjustment is that the hydraulic cylinder for the shutter slide actuation always opens or closes completely. The position of the setting lever only serves as a fixing for the shutter slide assembly, not as a stop to the shutter slide, and thus is not pressurised. In this way, any unintentional opening or adjustment of the application rate is avoided.

The benefits of the hydraulic shutter slide actuation

- ✔ No operator terminal required
- ✔ Individual hydraulic shutter actuation via two double-acting tractor spool valves
- ✔ Alternatively; also with a simple 3-way control unit

- ❗ “The notched quadrant and scale are punched. Advantage: the driver quickly finds the correct position and there is no sticker to come loose after several years of work.”

(“dlz agrarmagazin” – Field test ZA-V fertiliser spreader · 03/2017)



Accessible holder for the hydraulic hoses



Simple adjustment of the shutter assembly with large, easily visible scales

ZA-V Easy

With the machine-specific EasySet 2 in-cab terminal



ZA-V Easy: "Easy" isn't just in the name!

Comfortable electric adjustment and control

The EasySet 2 in-cab terminal provides the ability for automatic spread rate regulation at differing forward speeds. In this respect, the size of the aperture is adjusted automatically thus setting the shutter position in such a way that the application rate always remains constant. All that is needed is a 12 V power connection for the in-cab terminal. The operator has the option of using an X-sensor (pulse counting), a signal cable (transmission of the tractor speed) or a GPS antenna to transmit the speed signal.

In conjunction with electrical shutter actuation, EasySet 2 has the advantage that the application rate can be adjusted in very small steps. The desired application rate is simply entered into the in-cab terminal to the exact kilogram and this can be easily increased or reduced from the cab to both sides, or to either side, during the spreading operation.

To operate the Limiter V⁺, the desired working height for the relevant setting is initially pre-selected using the “+/-” keys on the in-cab terminal. The system is activated via the designated Limiter button. Any changes to the Limiter function, for instance when moving from field side to border or water course spreading, are also made using the “+/-” keys. If the situation requires it, e.g. during water course spreading, the spread rate can also be reduced towards the edge of the field.



Machine control is rounded off by a convenient function for semi-automatic rate calibration and the emptying of any fertiliser residues.

The benefits

- ✔ Forward-speed dependent application rate control
- ✔ Comfortable electrical operation and adjustment of the application rate from the tractor cab
- ✔ Simple in-cab terminal without menus, only direct function keys
- ✔ Integrated hectare meter with total area counter
- ✔ Border spreading via Limiter V⁺ with remotely controlled spread rate reduction

❗ "The EasySet 2 in-cab terminal is undoubtedly the highlight of the new fertiliser spreader."

❗ "You only need a few settings to adjust the spreader for a new spreading material."

(top agrar – Test report “Convenient and easy spreading” · 09/2021)

❗ "There are no menu levels. This makes all the settings clear."

❗ "It is also possible to adjust the rate for both sides together or separately. All of this can be understood without much explanation."

(top agrar – Test report “Convenient and easy spreading” · 09/2021)

ZA-V Profis Control

With the machine-specific AmaSpread 2 in-cab terminal



Thanks to the high-contrast colour display, the operator has all the spreading information available, even under varying light conditions



Modern design meets intuitive operation

With AmaSpread 2, AMAZONE offers an intuitive terminal for the ZA-V Profis Control weigh cell spreader. The simple operating structure combined with the high-contrast 4.3 inch colour display guarantees high levels of operator comfort. All the important functions such as the application rate and the position of the border spreading device can be actuated directly and comfortably using a back-lit button. This means that one-hand operation during spreading is not a problem.

Material-specific settings for up to ten different fertilisers can be stored and recalled at any time. In addition, the spread rate, covered area and working time are stored and can be utilised by the operator for easy documentation.

Apart from the forward-speed-related spread rate regulation, AmaSpread 2 also allows manual switching of up to six part-width sections and the use of the Profis weighing system. In addition, rapid adaptation of the fertiliser rate enables the timely reaction to field conditions. The terminal also offers precise spread rate regulation, thanks to the 200 Hz weighing system.

When using the Limiter V⁺ border spreading device, the operator can switch between side, boundary or water-course spreading, depending on the border situation, without leaving the tractor cab. Optional low level sensors

give the operator an early notification of an upcoming emptying of the hopper via the AmaSpread 2. The functions of the terminal are rounded off by the integration of work lights.

The benefits

- ✔ Forward-speed dependent application rate control
- ✔ Integration of a weighing function for precise quantity control
- ✔ Comfortable electrical operation and adjustment of the application rate from the tractor cab
- ✔ Switching of up to six part-width sections
- ✔ Automatic positioning of the Limiter combined with spread rate reduction for side, border and water course spreading
- ✔ Simple operation without detailed menu guidance

ZA-V mounted spreaders with ISOBUS

ZA-V Tronic | ZA-V Profis Tronic | ZA-V Profis Hydro



- ❗ “Simple and cost-effective part-width section control. Even with the spread rate reduction system of the ZA-V, good results can be achieved at the common working widths.”
 (“top agrar” – System comparison “Automatic spreading in wedge-shaped fields: Which system is best?” · 02/2016)



The complete level of functionality in the ISOBUS world

The ZA-V mounted spreader range is rounded off with the even more advanced ZA-V Tronic, ZA-V Profis Tronic and ZA-V Profis Hydro mounted spreaders. On these models, ISOBUS communication comes as standard.

Thanks to the quantity-effect-free aperture and the consistent, triangular-shaped spread pattern from the ZA-V's spreading unit, excellent results can be achieved through part-width section control via spread rate adaptation when spreading in short work and in wedge-shaped fields.

The mechanically-driven ZA-V Tronic offers eight-fold part-width section control as standard. The hydraulic spreading disc drive of the ZA-V Profis Hydro also allows the combination of spread rate adaptation and spreading disc speed. This enables even more precise spreading in wedge-shaped fields. Up to 16 part-width sections are possible in combination with Section Control.

The Profis spreaders feature forward-speed-related rate regulation and a state-of-the-art 200-Hz weighing system with two weigh cells. As option for the ZA-V Profis Tronic and ZA-V Profis Hydro, a tilt sensor is also available which continually ensures a precise weight, even in hilly terrain.

The Limiter V⁺ can be operated through any ISOBUS terminal for comfortable side, border and water course spreading. The material-specific, optimised settings for the relevant border spreading situations are conveniently stored in the fertiliser menu.

The benefits

- ✔ Convenient operation with a wide variety of ISOBUS terminals
- ✔ Integration into the tractor operation
- ✔ Settings made easy – optional Bluetooth connection of the mySpreader App
- ✔ GPS-Switch automatic part-width section control
- ✔ Use of application maps with GPS-Maps&Doc
- ✔ Job-related documentation in the Task Controller

AmaTron 4 ISOBUS terminal

Full functionality



The AmaTron 4 ISOBUS operator terminal, developed in-house by AMAZONE, enables convenient tablet-style, touch-screen control of any ISOBUS-enabled agricultural machine. AmaTron 4 makes all ISOBUS functionality possible - with added convenience, user-friendliness and overviews. And yet: it performs even better in combination with AMAZONE agricultural machinery and guarantees full functionality when it comes to precision farming.



ROBUSTNESS

STURDY!

- ✔ Low-reflection, 8" display with waterproof and dustproof aluminium housing
- ✔ Rear-mounted hand rest for a secure grip



RELIABILITY

WELL THOUGHT THROUGH!

- ✔ Practical and clear menu navigation for simple and intuitive use
- ✔ Actuation via touch screen or soft keys
- ✔ Simple documentation and job management: work first - then save the data
- ✔ Optional software licences for maximising every opportunity in precision agriculture



COMFORT

COMFORT!

- ✔ App carousel for quick and easy navigation at the swipe of a finger
- ✔ Freely configurable status bar - the most important parameters available at a glance, all of the time
- ✔ The practical quick-start menu allows quick and easy import and export of job data

Extended functionality via licences	ZA-V specific functions in AmaTron 4
GPS-Maps&Doc	<ul style="list-style-type: none"> • Inactive field boundaries and automatic field detection • Documentation via ISOBUS Task Controller or PDF export • Application maps in ISO-XML format and Shape file format • Online data exchange via the AmaTron Share App
GPS-Switch basic	<ul style="list-style-type: none"> • Section Control with up to 16 part-width sections • Virtual headland
GPS-Switch pro	<ul style="list-style-type: none"> • Auto-zoom, obstacle marking
GPS-Track	<ul style="list-style-type: none"> • Optical parallel guidance aid • Various different track modes
AmaCam	<ul style="list-style-type: none"> • Display of a camera image on the AmaTron 4 including reversing detection
AmaTron Twin	<ul style="list-style-type: none"> • Display extension using the AmaTron Twin App
GPS-ScenarioControl	<ul style="list-style-type: none"> • Extension of the AmaTron Twin licence, cross-machine route display

More convenience for machine operation

AmaTron Twin App – extended display for user-friendly operation

The AmaTron Twin App offers the driver even more comfort during work, as GPS functions in the map view can also be displayed on a tablet in parallel with the machine operation on the AmaTron 4.

Advantages of the AmaTron Twin display enhancement:

- ✔ Use of an existing mobile device
- ✔ Greater clarity – every application always in view
- ✔ Comfortable control of the GPS functions in the map view, in parallel, via the mobile device
- ✔ Clear, authentic representation of the working machine and its part-width sections



The AmaTron Twin App

AmaPilot+ – everything to hand!

Thanks to the AUX-N feature, you can operate multiple functions on the machine via the AmaPilot+ or any other ISOBUS multi-function joystick.



Advantages of AmaPilot+:

- ✔ Nearly every function is controlled directly via the 3 levels
- ✔ Adjustable palm rest
- ✔ Freely programmable, individual key layout

Workday made easy –

Make the most of the possibilities!

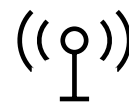
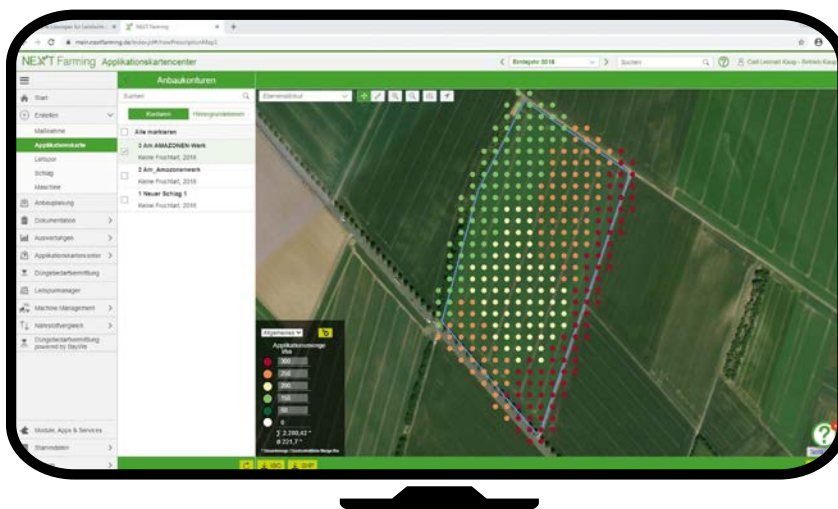
GPS-Maps&Doc with data exchange via the AmaTron Share App

With the GPS-Maps&Doc licence, the AmaTron 4 can gather and document both machine data and geo-referenced data via the Task Controller (TC). Part-area, site-specific operation via application maps in either Shape file or ISO-XML formats is also possible.

Advantages of GPS-Maps&Doc with the AmaTron Share App:

- ✔ Intuitive system for processing application maps
- ✔ Automatic part-area, site specific regulation of the application rate
- ✔ Indication of inactive field boundaries and automatic field detection when approaching the vicinity
- ✔ Optimum crop management via needs-based application
- ✔ Comfortable import of jobs in ISO-XML or Shape file format and export of completed jobs in ISO-XML format or as a job summary in PDF format via the AmaTron Share App
- ✔ Start a new task straight away and decide later whether the data is to be saved or not

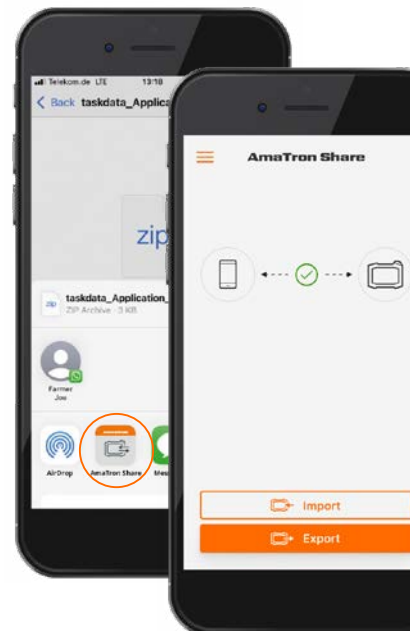
AmaTron Share App – for comfortable data management!



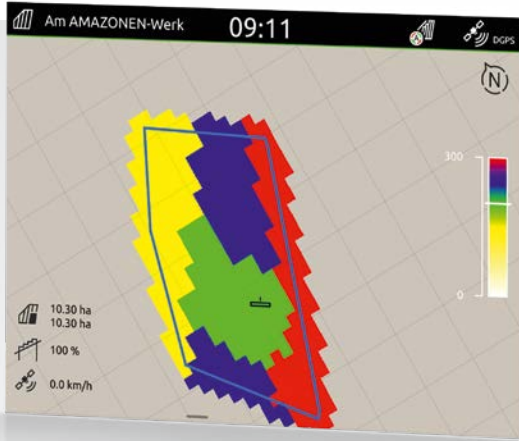
ISO-XML and
shape



ISO-XML and
PDF



Generation of an application map in a farm management information system for automatic part-area, site-specific control of the application rate via the AmaTron 4



Display of the application map in AmaTron 4



Display of the camera image in the AmaTron 4

GPS-Track

The GPS-Track parallel guidance greatly helps with orientation in the field, especially on grassland or in areas without tramlines.

- ✔ With a virtual light bar in the status bar
- ✔ Automatic tramline control via GPS for seed drills
- ✔ Various track modes such as A-B lines or contour following
- ✔ Optional with AmaTron 4

AmaCam

Software licence for displaying a camera image on AmaTron 4.

- ✔ Automatic display of the camera image on AmaTron 4 when reversing

AmaTron Share App for digital data transfer. Try it now!

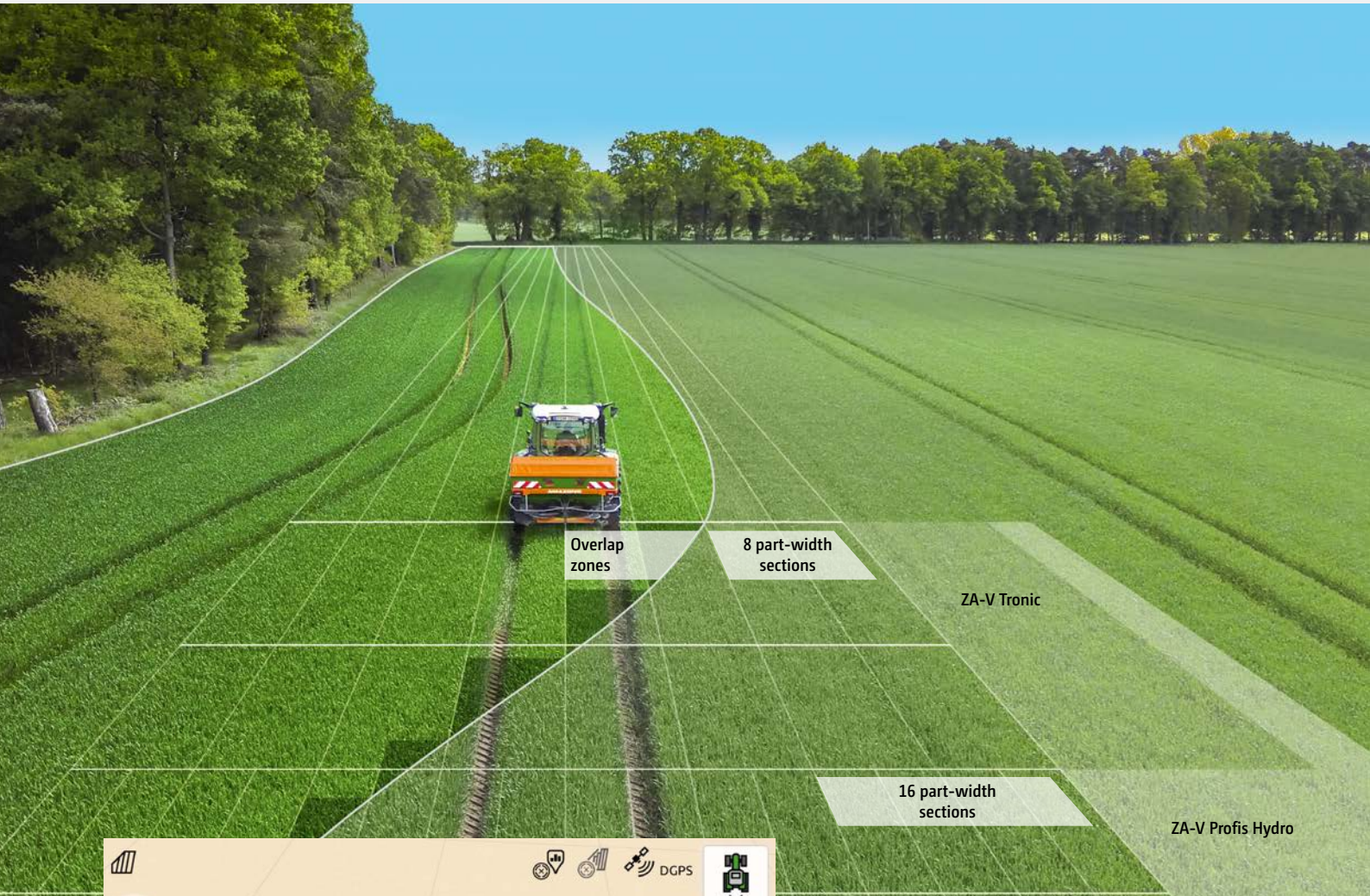
The AmaTron Share App, which is connected to the AmaTron 4 via a Wi-Fi hotspot, allows all data to be conveniently imported and exported online. For example, the App enables application maps to be easily sent from the office to the AmaTron 4 for completion. Job data can also be sent to customers or back to the office as PDF documentation via the cloud, email or messenger services such as WhatsApp after the job has been completed. This is user-friendly data management!



The AmaTron Share App



Automatic GPS-Switch part-area shut-off with Section Control



Urea



CAN

Each fertiliser has different trajectory characteristics. This is why Section Control calculates the exact switching points for the optimum position of the spread fan on each pass.

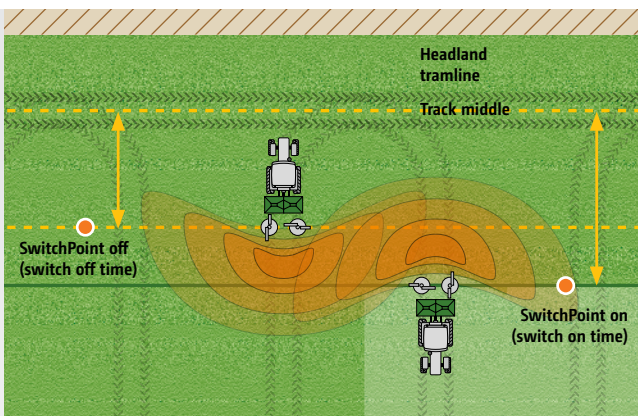
GPS-Switch

If the operating terminal facilitates Section Control, such as GPS-Switch part-width section control from AMAZONE, the part-width sections are activated completely automatically and in relation to the GPS position. Once a field has been created, and then in automatic mode, the driver can concentrate fully on the operation of the towing vehicle, since the part-width sections are switched automatically in wedge shaped fields and on headlands.

With GPS-Switch, AMAZONE offers GPS-based, fully automatic, part-width section control for all AMAZONE operator terminals and ISOBUS-compatible fertiliser spreaders, crop protection sprayers or seed drills.

Benefits of automatic part-width section control:

- ✔ Stress relief for the driver
 - ✔ Increased precision, even at night or at higher speeds
 - ✔ Fewer overlaps and gaps
 - ✔ Saving inputs
 - ✔ Less crop damage and environmental impact
- ❗ “With Section Control, the ISOBUS terminal takes on so much of the work from the driver.”
 (“dlz agrar magazine” – test report ZA-TS fertiliser spreader · 02/2017)



- ✔ **SwitchPoint**
 When using GPS-Switch, SwitchPoint enables the adjustment of the switch-on and switch-off points, depending on fertiliser type and working width. Both values can be taken from the spreading chart and entered into the relevant operator terminal.



Spreader Application Centre

The heart of spreader development

The Spreader Application Centre (SAC) with its fertiliser laboratory (over 30,000 samples), spreading hall (over 100,000 spreading tests), customer service and in-house software development is at the heart of AMAZONE's fertilisation technology development. For decades, the company has been working on optimising fertiliser spreaders with pioneering technologies such as AutoTS, ArgusTwin and WindControl or the use of artificial intelligence for EasyCheck or EasyMix.

The goal is precise lateral distribution and spread rate accuracy under all conditions and for all fertilisers, in order to provide our customers with the best possible support - and this has been the case since 1950, when the first manual spreading tests were carried out. Today, working widths of up to 72 metres can be tested in one of the most technologically advanced spreading halls in the world and digitally examined with our in-house developed software. We also offer our customers personal fertiliser analysis

(5 kg samples), in order to provide individual recommendations on the optimum spreader settings and spread patterns for their fertiliser samples. The recommendations can be found directly in the mySpreader App via a QR code and used immediately to set your fertiliser spreader.

Access to the SAC's extensive fertiliser database for all fertilisers and all spreader types allows you to benefit from decades of experience and expertise in the field of fertilisation – for the best results and maximum efficiency!

The benefits

- ✔ Extensive fertiliser database for all spreader models
- ✔ Free setting recommendations for your fertiliser samples
- ✔ Direct contact for questions about spreader settings or unknown spreading materials

Only when properly spread is your fertiliser worth its weight in gold

The AMAZONE FertiliserService cooperates closely with well-known, spreading material manufacturers– worldwide - to be able to make available to you the best settings as quickly as possible. AMAZONE is the name for precise spreading charts, worldwide.



FertiliserService – You can contact us via:

The FertiliserService works across borders, but not only geographically. This is because no matter whether your fertiliser spreader is 1 or 50 years old, we are always by your side with competent and reliable assistance.

Internet: www.amazone.net
 ✉ E-Mail: duengeservice@amazone.de
 Telephone: +49 (0)5405 501-111
 WhatsApp: +49 (0)175-488 9573

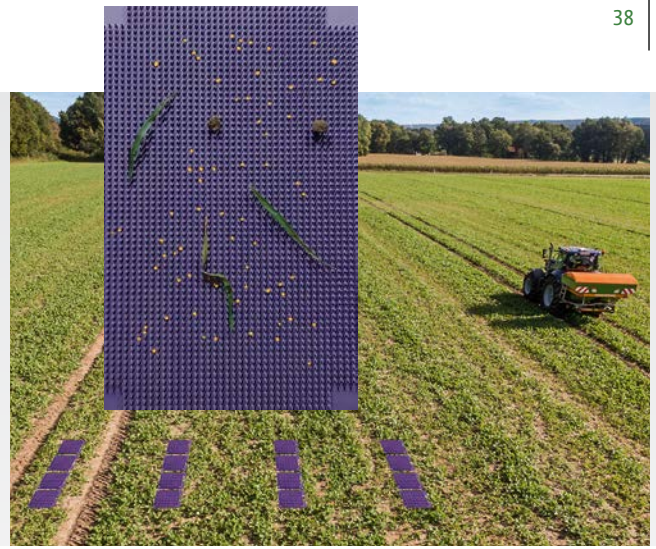
AMAZONE fertiliser spreaders can be optimally set up using the free **mySpreader App**:



Modern fertiliser spreader testing hall

mySpreader App

The all-in-one package for perfect spreader adjustment



EasyCheck is an integral part of the mySpreader App

This is FertiliserService!

The optimum spreader adjustment is an essential element for uniform plant growth. In this respect, the great variability of the spreading materials represents a major challenge. With the all-in-one package of the mySpreader App, the operator has the entire fertiliser database at their fingertips and can draw on the combined expertise of the AMAZONE Spreader Application Centre (SAC). The operator accesses precise recommendations for the setting of the respective AMAZONE fertiliser spreader based on machine model, the individual fertiliser type, working width and the application rate.

The mySpreader App becomes a useful management tool for your spreader with extensive functions such as the Easy-Check calibration aid and connection via Bluetooth.

The benefits

- ✔ A single App for all spreader settings
- ✔ The entire fertiliser database at your fingertips
- ✔ Clear and intuitive to use

EasyCheck mobile test kit with AI – always accurate!

The camera function in the mySpreader App is equipped with artificial intelligence to enhance the use of the EasyCheck digital mobile test kit. When photographing the collecting mats, foreign objects, e.g. soil or leaves, are detected and effectively filtered out. The App calculates the fertiliser distribution and provides precise setting recommendations for easy optimisation of the lateral distribution.

All the settings for the spreader can be transferred from the mySpreader App to the AMAZONE fertiliser spreader via a Bluetooth adapter. This saves time and avoids setting errors, whilst, at the same time, being much more convenient.



Technical data

ZA-V mounted spreaders

	ZA-V 1400	ZA-V 1700	ZA-V 2000	ZA-V 2200	ZA-V 2600	ZA-V 2700	ZA-V 3200	ZA-V 4200
Working width (m)	10–36							
Hopper capacity (l)	1,400	1,700	2,000	2,200	2,600	2,700	3,200	4,200
– with bolt-on extension S 600 (l)	2,000	2,300	2,600	–	–	–	–	–
– with bolt-on extension L 800 (l)	–	–	–	3,000	–	3,500	4,000	–
Payload (kg)	with Special frame	2,200	2,200	2,200	–	–	–	–
	with Super frame	3,200	3,200	3,200	3,200	3,200	3,200	–
	with Ultra frame	–	–	–	4,500	–	4,500	4,500
Filling height (m)	1.13	1.23	1.32	1.31	1.48	1.42	1.54	1.77
Filling width (m)	2.22	2.22	2.22	2.71	2.22	2.71	2.71	2.71
Overall width (m)	2.55	2.55	2.55	2.92	2.55	2.92	2.92	2.92
Overall length (m)	1.68	1.68	1.68	1.68	1.68	1.68	1.68	1.68
Drive	mechanical / hydraulic (ZA-V Profis Hydro)							
Min. weight (kg) (with PTO shaft, V-Set 2)	351	357	366	444	420	463	481	579

Illustrations, content and technical data are not binding and may differ depending on the level of equipment. Country-specific road traffic regulations apply and must be complied with, meaning that special approval may be required. The permissible axle loads and total weights of the tractor should be checked. Not all the listed combination options are possible with all tractor manufacturers.



Ahead in the field and safe on the road: ZA-V
ZA – the spreader