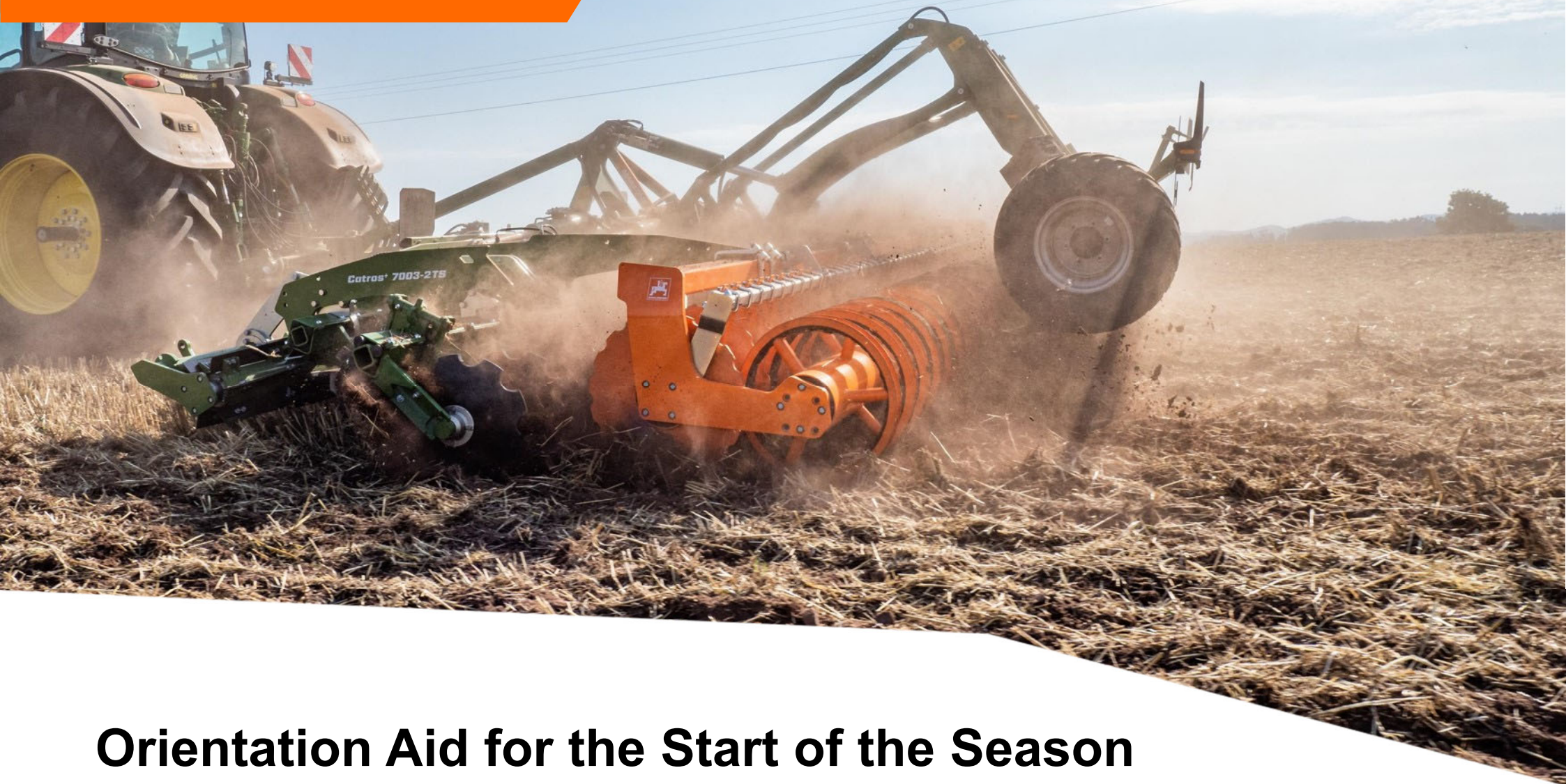




AMAZONE



Orientation Aid for the Start of the Season

- Catros^{+/XL} 4003-2TS
- Catros^{+/XL} 5003-2TS
- Catros^{+/XL} 6003-2TS
- Catros⁺ 7003-2TS

Table of Contents

1. General information
2. Preparation for operation
3. Put the implement into working position
4. Activating the vibration compensation
5. Driving on the headlands
6. Setting options on the implement
7. Optional front rack tools

1. General information

- Use of this document requires that the **operating manual** for the implement has been **read** and **understood**. The corresponding documents are shown on the right side.
- For this reason, it is **necessary** to refer to the operating manual for additional information. The **operating manual** must **always be available** when performing the orientation aid for the start of the season with the CatrosXL XX03.
- The **Orientation Aid for the Start of the Season - CatrosXL XX03** document serves as a guideline for the user to check the implement for the new season and to put it back into operation. This document is based on the current implement generation and is also only valid for this version.



2. Preparation for operation

Tractor prerequisite:

- Starting at 30 HP/m of working width for Catros⁺ x003-2TS
- Starting at 40 HP/m of working width for Catros^{XL} x003-2TS

- **Tractor pump capacity:** min. 15 l/min at 150 bar
- **Maximum operating pressure:** 210 bar
- **Mounting category:** 3. / 4. / K80 / drawbar eye

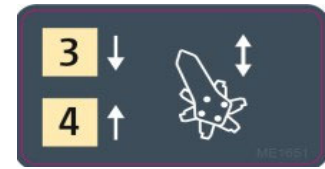
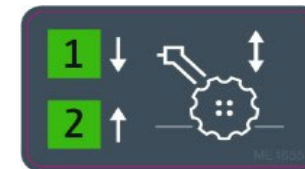
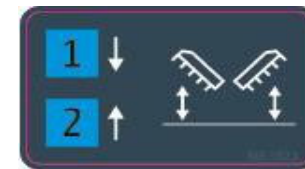
- **Connections:** depending on the implement equipment, the following connections are required:
4x DA: with adjustable flow rate

Coupling the implement:

- Pick up and secure the implement using the lower links. Fold up the parking support. Establish all of the connections: brake lines, lighting, unlocking cable, and hydraulic system. Observe the ballasting and dimensions of the implement combination according to road traffic regulations.

Maintaining the implement:

- Lubricate and check the implement before field operation.
- Lubrication interval every 500 h
- Wear limit of the discs: 360 mm
- Further information in the operating manual
"Section 9 - Maintaining the implement"

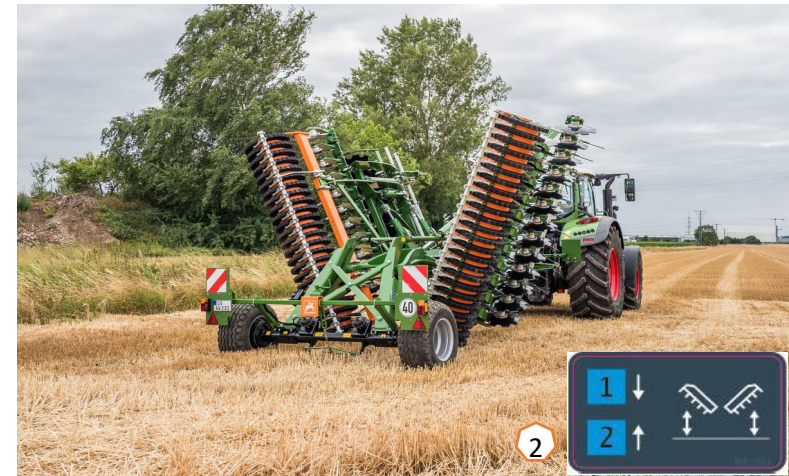
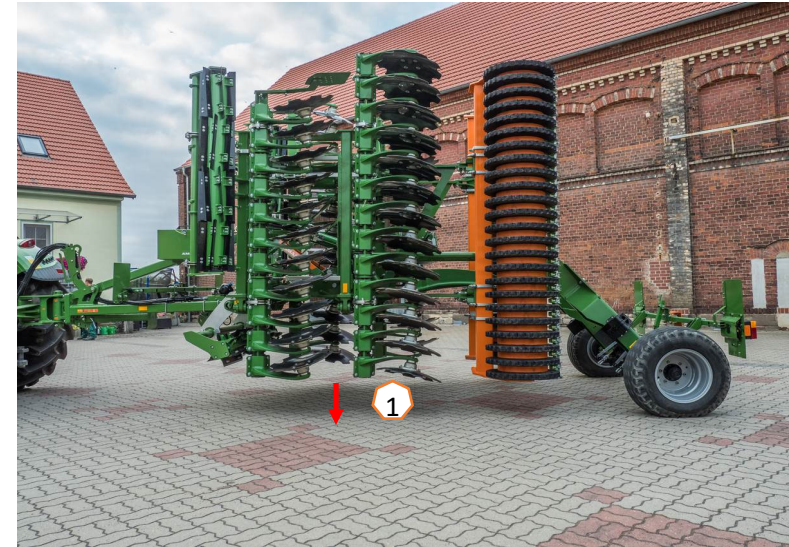


3. Putting the implement into working position

Caution!

No one may stand in the danger area.

- **Folding procedure:** lift the implement far enough so that the discs (1) do not touch the ground during the folding procedure. Actuate the "blue" control unit (2) to completely unfold the implement.
- **Working position:** lower the implement using the running gear (3) and align the frame (4) parallel to the ground using the hydraulic system.



4. Activating the vibration compensation

- **Function:** the vibration compensation can reduce or even prevent rocking or jumping of the implement during field operation.
- **Activation:** open the stop tap (1) above the running gear hydraulic cylinder (2). Lower the running gear down to approx. 20 – 30 cm above the ground (3) and switch the "yellow" control unit to the float position (4).

Warning:

Close the stop tap before road transport.



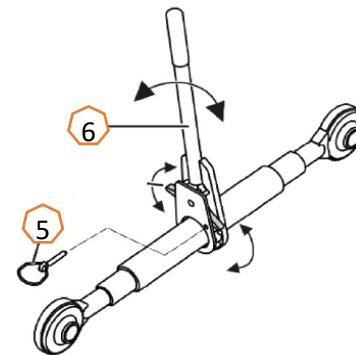
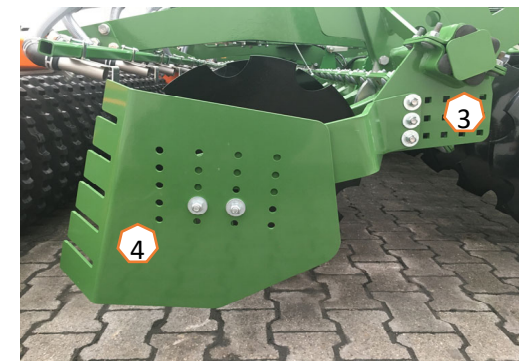
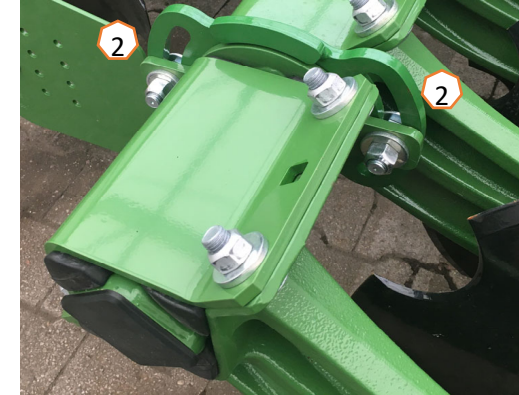
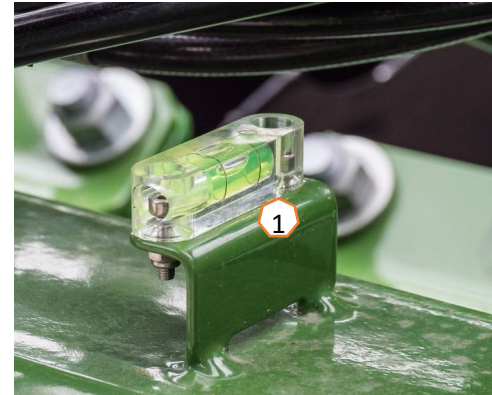
5. Headland travel

- Lower link hitch:** lift the implement as far as it goes using the tractor's hydraulic system (1). Travel on the headlands is performed on the roller (2), optionally the implement can also be driven on the headlands via the running gear (3).
- Note:** when the working depth is set to the maximum and the implement is completely lifted, the second disc gang only still has ground contact up to a depth of 2 cm. Therefore, it is not completely lifted.
- Drawbar eye / ball coupling:** lift the implement using the swivelling running gear and the drawbar cylinder. Travel on the headlands is performed on the swivelling running gear.



6. Setting options on the implement

- **Implement alignment:** align the frame parallel to the ground. The additional spirit level (1) on the implement frame can be used as a reference.
- **Side discs:** their depth can be changed separately on the left and right by turning (2) to achieve a uniform working pattern.
- **Side panels:** their angle can be adjusted individually using the hole pattern and elongated slot on the carrier (3). The action of the panels can be further adjusted with another hole pattern (4) directly on the side panel.
- **Mechanical working depth:** remove the linch pin (5) from the spindle. Use the hand lever (6) to lengthen or shorten the spindle. Secure the spindle again with the linch pin. **Note:** adjust both spindles to the same length!
- **Hydraulic working depth:** actuate the "green" control unit (7), read the working depth on the scale. **Note:** the scale does not show the real working depth! If there is **lateral pull**, calibrate the disc array cylinder by moving it to the shallowest working position with the "green" control unit (7), hold "green" against pressure for approx. 5 sec. (8).

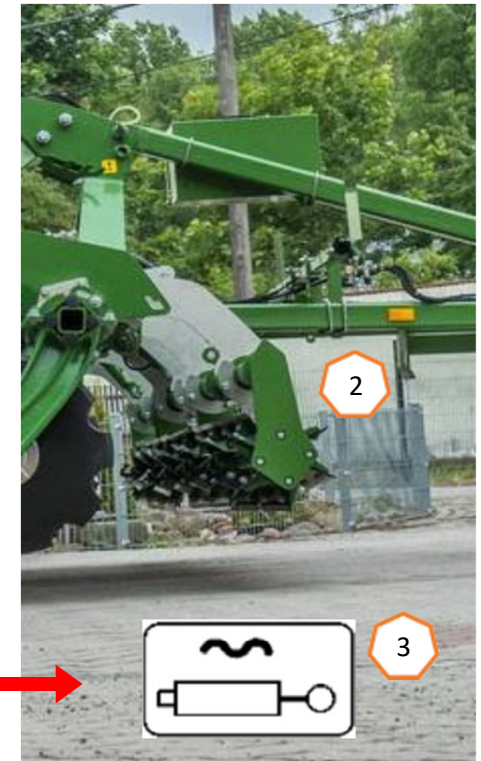
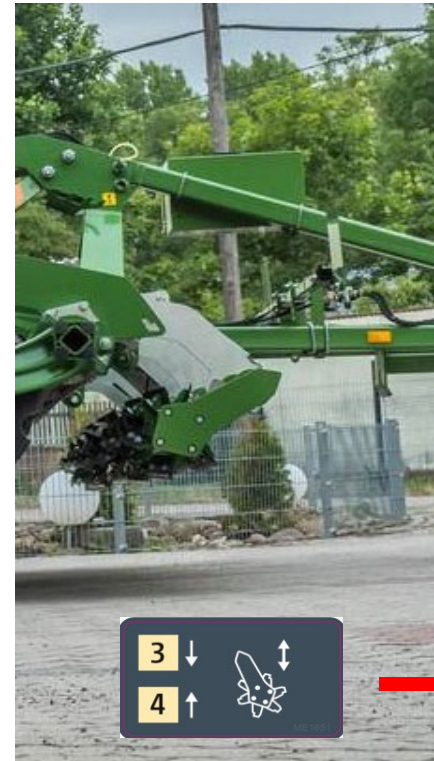
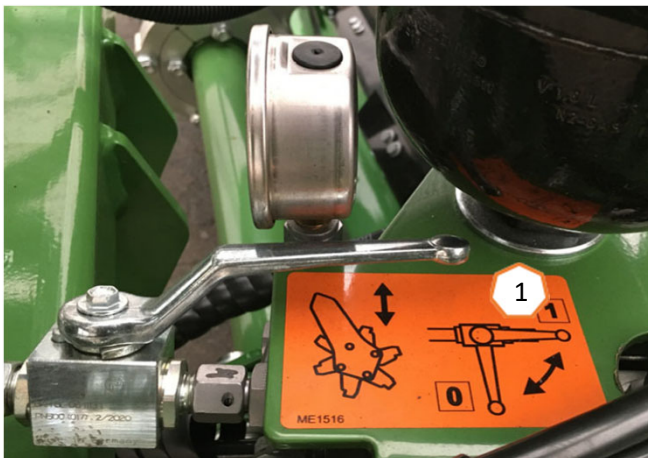


7. Optional front rack tools

- Crushboard:** depending on the implement equipment, adjustment is performed mechanically using a spindle or hydraulically with the "beige" control unit.



- Cutting roller:** Activate the hydraulic function via the stop tap (1) on the drawbar. With the implement lifted, swivel the cutting roller completely out and move it against pressure (2). External control unit "beige" control unit to the float position (3).



SmartLearning app

The AMAZONE SmartLearning app offers video training courses for the operation of Amazone implements. The video training courses can be downloaded onto your smartphone if necessary, and are therefore available offline. Simply select the desired implement for which you want to watch a video training course.



Info Portal

Our Info Portal provides a wide variety of documents for viewing and downloading free of charge. These can be technical and promotional printed material as an electronic version or also videos, Internet links and contact data. Information can be obtained by mail and subscriptions to new published documents from different categories are available.

www.info.amazone.de/



AMAZONEN-WERKE H. Dreyer SE & Co. KG

Postfach 51 · D-49202 Hasbergen-Gaste

Tel. +49 (0)5405 501-0 · Fax: +49 (0)5405 501-147

www.amazone.de · www.amazone.at · email: amazone@amazone.de



MG7190